

For All Residential Service Issues

Call Waste Pro: (954) 967- 4200 to speak directly to customer service or complete the form on the Town's website: www.southwestranches.org by clicking on the Waste Pro icon.



SOLID WASTE



(Non-recyclable Household Waste)

SOLID WASTE COLLECTION SERVICE DAYS

AREA 3	AREA 2	AREA 1
Wednesday and Saturday	Tuesday and Friday	Monday and Thursday

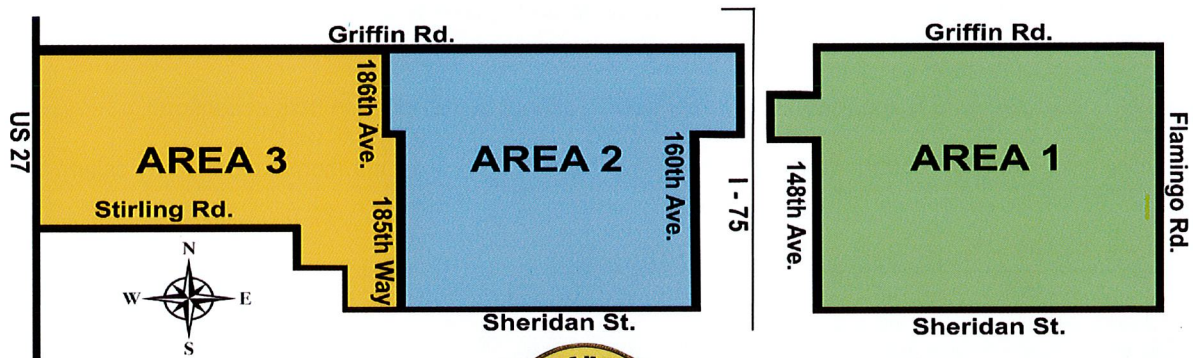
Accepted Solid Waste Collection Guidelines

- Solid waste is collected twice (2) per week based on your location.
- Do not place waste out for collection more than 48 hours in advance of pickup.
- Solid waste must be placed curbside before 7 AM on day of pickup.
- All empty containers must be removed from swale that day.
- All solid waste must be placed in waste can or plastic garbage bag that weighs less than 50 pounds.
- Waste cans must be 40 gallons or smaller with handles and a lid.
- Loose items will not be collected.
- Residents are responsible for their own garbage cans.
- Horse manure will not be collected.
- No service will take place under hurricane warning.

No service on December 25, 2021 - Collection will occur on your next regularly scheduled collection day.

For All Commercial Businesses

Nurseries and landscapers are prohibited from placing anything out for collection. You must have a commercial dumpster on-site or remove items from property. Call Waste Pro: (954) 967- 4200



Waste Pro is the exclusive provider for all residents and businesses in Southwest Ranches for solid waste, recyclables, and bulk waste.



BULK TRASH GUIDELINES

Bulk Trash

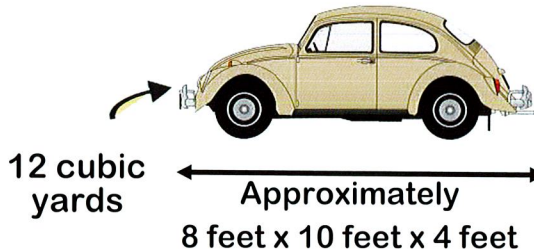
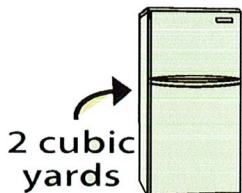
Bulk trash includes, but is not limited to, large appliances (refrigerator doors must be removed with Freon free sticker visible), white goods, couches, chairs, mattresses, tables, carpets and padding, and vegetation debris. Bulk trash must be placed separate from

regular garbage and must be generated at the residence where it is collected.

- Bulk trash must be placed curbside in a neat and orderly manner that facilitates safe collection by an overhead grapple truck.
- Please ensure bulk piles are located away from low hanging overhead wires.
- Loose items must be placed in a bag, box, carton, or crate that can be safely lifted without breaking and weigh no more than 50 pounds.
- Glass items must be in a rigid taped container.
- Bulk waste cannot be placed out any earlier than the Saturday before your scheduled collection day and no later than 7 AM on collection day.
- Residents are permitted a maximum of twelve (12) cubic yards in total of bulk waste combined to place out for collection.
- Please remember: 12 cubic yards is equivalent to the size of a Volkswagen Beetle, which is approximately 8 feet wide by 10 feet long and 4 feet tall.
- **Bulk piles that exceed 12 cubic yards will be picked up and Waste Pro will bill the resident the additional yardage at the rate of \$17.50 per cubic yard.**

YARD & VEGETATIVE WASTE APPROXIMATE SIZES:

12 cubic yards = 8 feet wide by 10 feet long and 4 feet tall.



Bulk Yard Trash

- Bulk yard trash must be included with normal household yard waste. This includes tree trimmings, branches, palm fronds, and other yard trash. No single item can exceed four (4) feet in length or 50 pounds in weight.
- Homeowners are responsible for ensuring construction contractors and landscape maintenance providers remove all debris generated by their services.
- Residential contracted landscaper debris / nursery debris will not be removed in bulk collection.
- Owner generated construction debris will not be removed as part of regular bulk pick-up.
- Construction and demolition debris removal service can be arranged at an additional expense by calling Waste Pro: (954) 967-4200.

Items that cannot be included in normal collection

- Hazardous or exempt waste: motor oils, paint, batteries, pesticides (The Town has seven Household Hazardous Waste Events per year for these items.)
- Biological sludge and horse manure.
- Automotive bodies, engines, transmissions, batteries, tires of any size, and other automotive and marine parts.
- Construction and demolition debris including steel, brick, concrete, roofing materials, pipe, wallboard, fencing, and lumber from the construction.
- Windows, mirrors, and glass panes.
- Destruction or reconstruction of a structure including rocks, soil, tree remains or other vegetative matter that comes from land clearing or land development.
- Hurricane storm debris (Hurricane debris will be handled by a different pickup.)

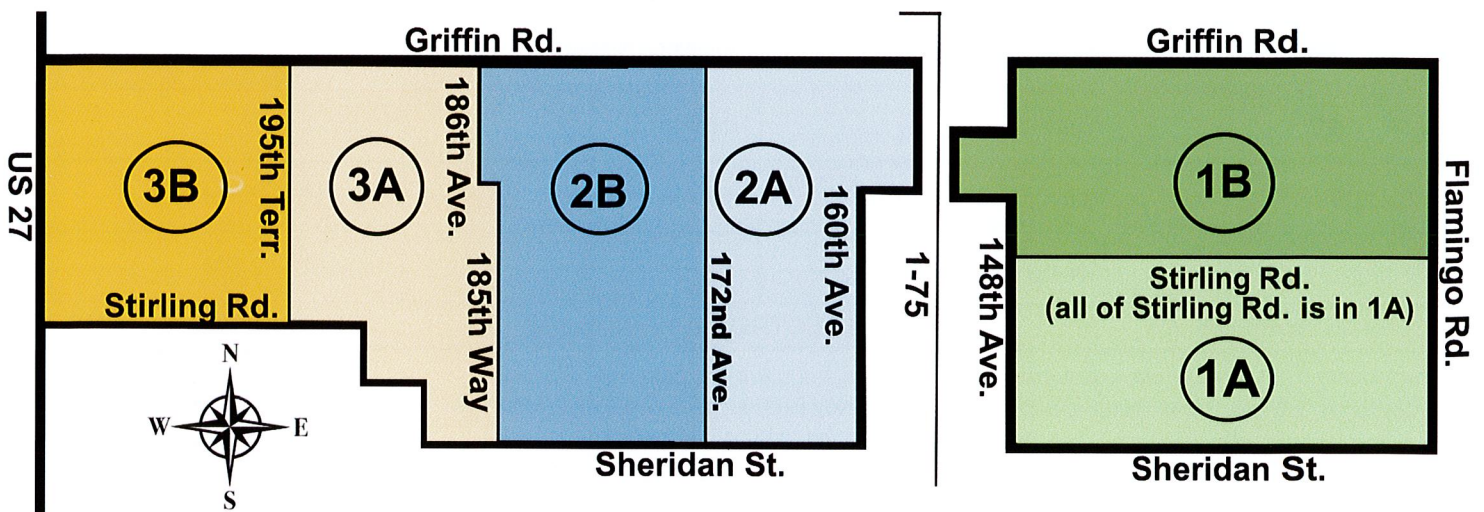
Town of Southwest Ranches



Bulk Collection Route Schedule October 1, 2021 through September 30, 2022



Month	Area	WEDNESDAY Only	Area	TUESDAY Only	Area	MONDAY Only
Oct. 2021	3-A	10/06 - 10/20	2-A	10/05 - 10/19	1-A	10/04 - 10/18
	3-B	10/13 - 10/27	2-B	10/12 - 10/26	1-B	10/11 - 10/25
Nov. 2021	3-A	11/03 - 11/17	2-A	11/02 - 11/16 - 11/30	1-A	11/01 - 11/15 - 11/29
	3-B	11/10 - 11/24	2-B	11/09 - 11/23	1-B	11/08 - 11/22
Dec. 2021	3-A	12/01 - 12/15 - 12/29	2-A	12/14 - 12/28	1-A	12/13 - 12/27
	3-B	12/08 - 12/22	2-B	12/07 - 12/21	1-B	12/06 - 12/20
Jan. 2022	3-A	1/12 - 1/26	2-A	1/11 - 1/25	1-A	1/10 - 1/24
	3-B	1/05 - 1/19	2-B	1/04 - 1/18	1-B	1/03 - 1/17 - 1/31
Feb. 2022	3-A	2/09 - 2/23	2-A	2/08 - 2/22	1-A	2/07 - 2/21
	3-B	2/02 - 2/16	2-B	2/01 - 2/15	1-B	2/14 - 2/28
Mar. 2022	3-A	3/09 - 3/23	2-A	3/08 - 3/22	1-A	3/07 - 3/21
	3-B	3/02 - 3/16 - 3/30	2-B	3/01 - 3/15 - 3/29	1-B	3/14 - 3/28
Apr. 2022	3-A	4/06 - 4/20	2-A	4/05 - 4/19	1-A	4/04 - 4/18
	3-B	4/13 - 4/27	2-B	4/12 - 4/26	1-B	4/11 - 4/25
May 2022	3-A	5/04 - 5/18	2-A	5/03 - 5/17 - 5/31	1-A	5/02 - 5/16 - 5/30
	3-B	5/11 - 5/25	2-B	5/10 - 5/24	1-B	5/09 - 5/23
June 2022	3-A	6/1 - 6/15 - 6/29	2-A	6/14 - 6/28	1-A	6/13 - 6/27
	3-B	6/08 - 6/22	2-B	6/07 - 6/21	1-B	6/06 - 6/20
July 2022	3-A	7/13 - 7/27	2-A	7/12 - 7/26	1-A	7/11 - 7/25
	3-B	7/06 - 7/20	2-B	7/05 - 7/19	1-B	7/04 - 7/18
Aug. 2022	3-A	8/10 - 8/24	2-A	8/09 - 8/23	1-A	8/08 - 8/22
	3-B	8/03 - 8/17 - 8/31	2-B	8/02 - 8/16 - 8/30	1-B	8/01 - 8/15 - 8/29
Sept. 2022	3-A	9/07 - 9/21	2-A	9/06 - 9/20	1-A	9/05 - 9/19
	3-B	9/14 - 9/28	2-B	9/13 - 9/27	1-B	9/12 - 9/26



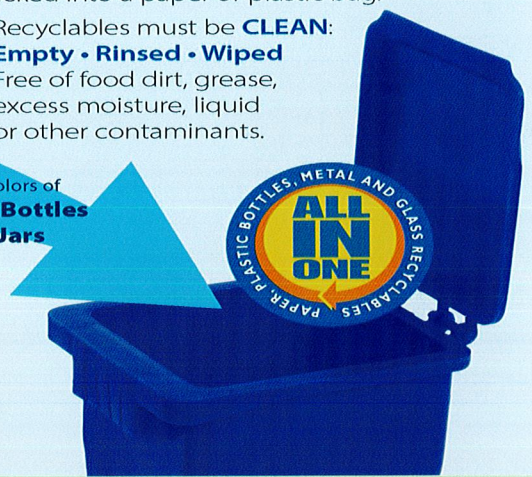
RECYCLE RIGHT!



SINGLE STREAM RECYCLING

You **do not** need to separate your paper recyclables from cans, plastic bottles or any of the other accepted recyclables – it all goes into the **Blue Cart**.

- There is a label on the lid of each cart with a reminder of what recyclable materials can be placed in the cart.
- Flatten all boxes and place them at the curb in or next to your **Blue** recycling cart and we will pick them up on your recycling collection day. Boxes larger than 18" X 24" must be set out on your bulk pick up day for recycling collection.
- Newspapers should be placed loose in the cart, not packed into a paper or plastic bag.
 - Recyclables must be **CLEAN: Empty • Rinsed • Wiped** Free of food dirt, grease, excess moisture, liquid or other contaminants.



Do not recycle:

- ❌ Soiled pizza boxes
- ❌ Styrofoam
- ❌ Plastic cups
- ❌ Plastic bags
- ❌ Gas cylinders
- ❌ Flammables
- ❌ Appliances
- ❌ Aluminum foil
- ❌ Foil trays
- ❌ Pie plates
- ❌ Bottle caps
- ❌ Hazardous waste
- ❌ Aerosol cans
- ❌ Toys
- ❌ Plants
- ❌ Dishes/Plates
- ❌ Batteries
- ❌ Clothes/Textiles
- ❌ Tires
- ❌ Hoses
- ❌ Garbage

HOUSEHOLD HAZARDOUS WASTE SCHEDULE 2021-2022

8:00 AM — 2:00 PM

Rolling Oaks Barn: 17630 Southwest 56 Street, Southwest Ranches, 33331

Waste Pro Facility: 17302 Pines Blvd., Pembroke Pines, 33029

This service is provided for Town residents only. Proof of residency is required.

Date	Location	Shredding	Drug Drop Off
September 11, 2021	Rolling Oaks Barn	10 AM - 1 PM	10 AM - 2 PM
November 13, 2021	Waste Pro Facility	None	None
January 8, 2022	Rolling Oaks Barn	10 AM - 1 PM	10 AM - 2 PM
March 12, 2022	Rolling Oaks Barn	10 AM - 1 PM	10 AM - 2 PM
May 14, 2022	Waste Pro Facility	None	None
July 9, 2022	Rolling Oaks Barn	10 AM - 1 PM	10 AM - 2 PM
September 10, 2022	Rolling Oaks Barn	10 AM - 1 PM	10 AM - 2 PM

ACCEPTABLE ITEMS

Aerosol Cans • Antifreeze/Coolant • Batteries & Auto Batteries • BBQ & Camp Size Propane • Cleaners Pesticides • Fluorescent Tubes/Bulbs • Garden Chemicals • Latex/Oil-Based Paint • Pool Chlorine • Tires (up to 4 - no rims) • Used Oil & Filters

ELECTRONIC RECYCLING

Computers • Cables • DVD Players • Key Boards • Mice • Adapters • Monitors • Printers/Scanners • Radio • Stereo Components • TVs • Tape Players • VCR's

UNACCEPTABLE ITEMS

Appliances • Asbestos • Explosives/Ammunition • Medical/Infectious Waste • Non-Residential Waste